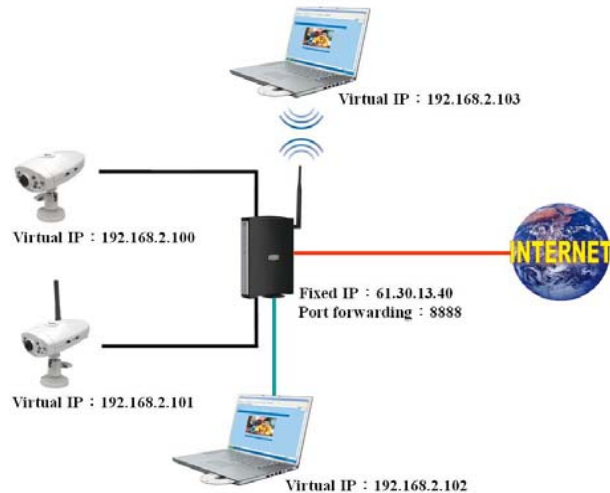


GRAND IP / Wi-Fi CAMERA PRO

Quick Guide

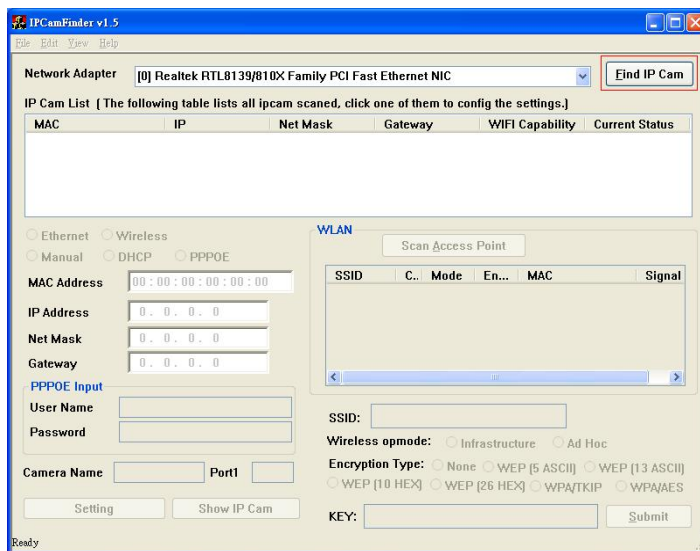
1. Connection of the IP / Wi-Fi Camera PRO

Connect the Grand IP or Wi-Fi Camera PRO with your gateway, likes the following figure.

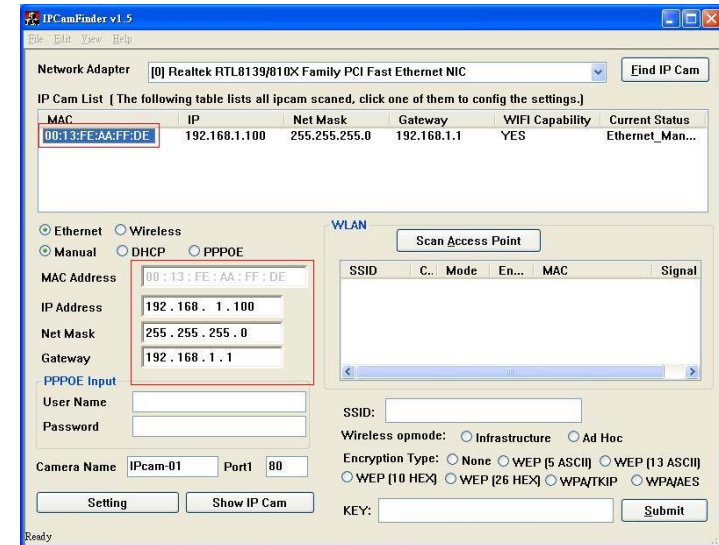


■ Method 1 : Connect By IP Auto Detect

Step 1 : Please install the IP Auto Detect Tool in Driver CD, then execute the software “**IP Cam Setup.exe**” on the desktop, then press “**Find IP Cam**”



Step2 : Select “**MAC**” then will show the IP status.



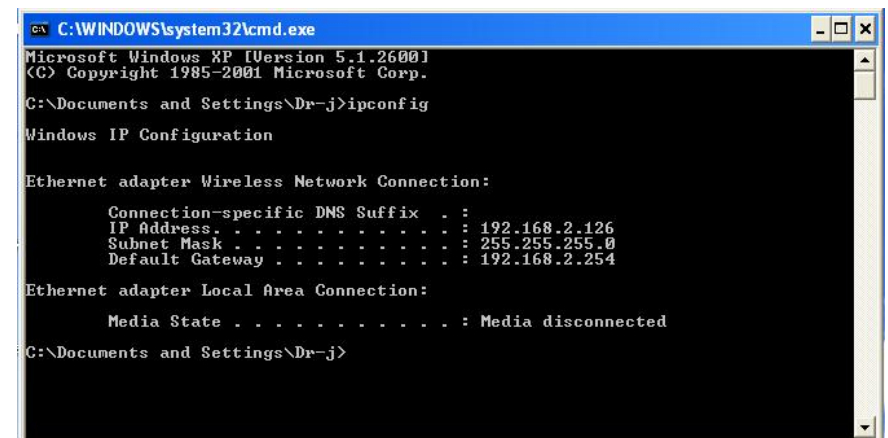
Step 3 : Select a LAN Device, and click the button “Auto Detect”.

Step 4 : All Grand IP and Wi-Fi cameras PRO will listed out on “IP Camera”, and then click the IP camera and assign the IP address by the button “Setup”.

Please according the following steps to get Network information. (IP address, Net Mask and Gateway)

Step 5 : Click “Start”→”Run” and type in : ”command” and then press “ENTER”.

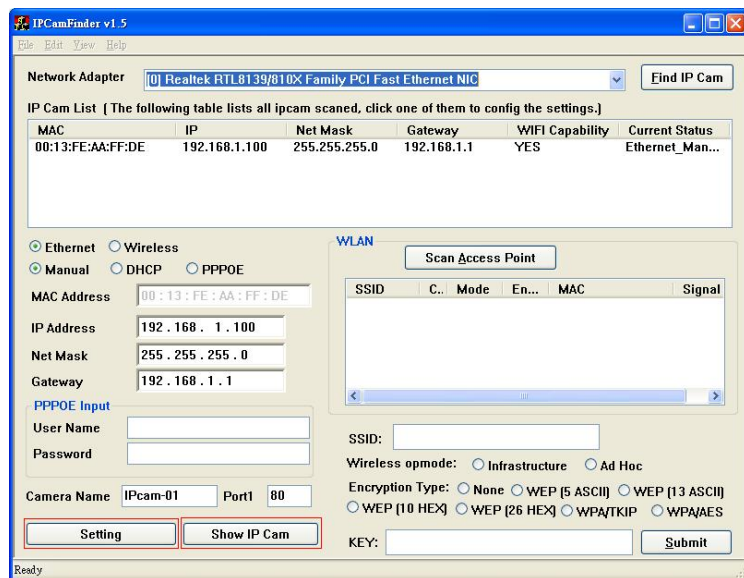
In the MS-DOS window, then type the command “ipconfig” and then press “ENTER”to get the network information.



Step 6 : Then you can assign the IP address, Subnet Mask (NET Mask) and Default Gateway (GateWay) to the Grand IP / Wi-Fi camera PRO.

NOTE : You must use the same Subnet Mask (NET Mask) and Default Gateway (GateWay). You can use any IP address between 192.168.2.1-254, but make sure the IP address has never been used.

Step11 Click the button “**Setting**”, and “**Show IP Cam**” then you can connect to Camera

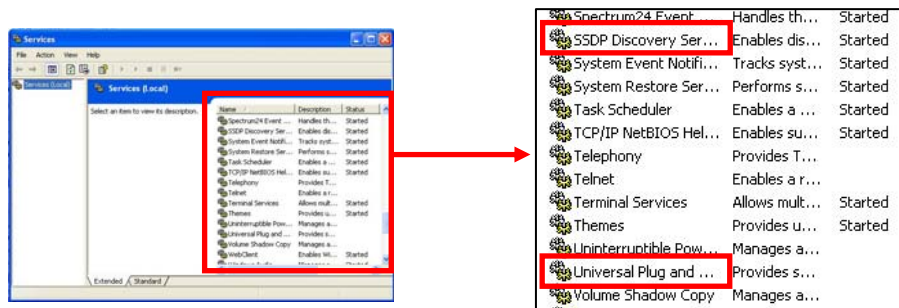


■ Method 2 : Connect By UPnP (Universal Plug and Plug)

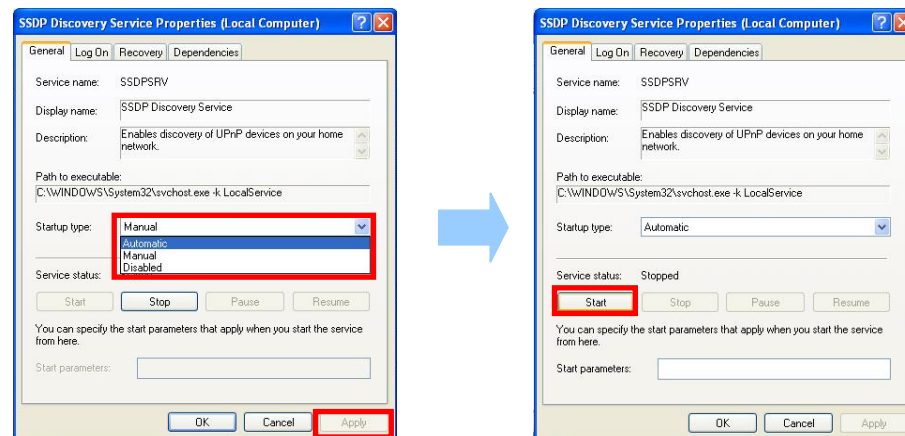
NOTE : This function only supports XP SP2 system, and please use the router with UPnP function.

Step 1 : Please click “start” → “Setting” → “Control Panel” → “Administrative Tools” → “Services”.

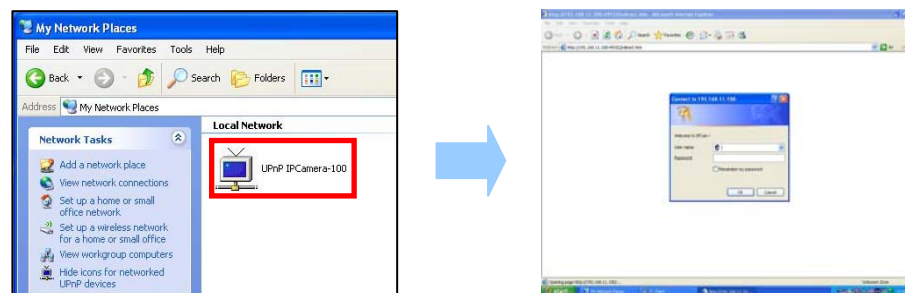
Step 2 : In the “Service” window, please select and double-click the service “SSDP Discovery Service”.



Step 3 : Please select the item “Automatic” in the “Startup type” and click “Apply” to change. Then click “Start” and “OK” to quit the window.

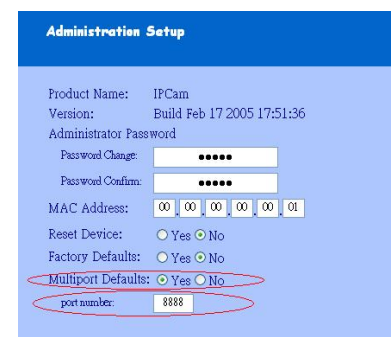


Step 4 : Please double-click the “UPnP IP Camera-100” item in “My Network Places” to connect the Grand IP / Wi-Fi Camera PRO.

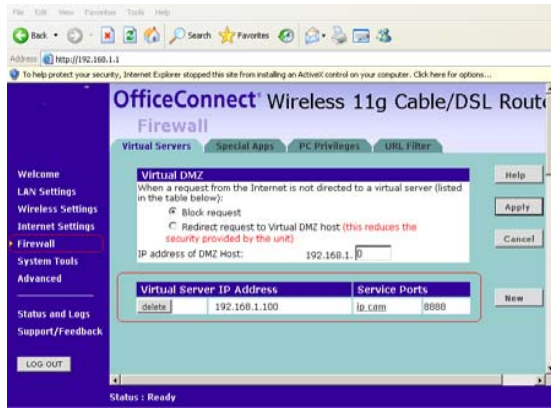


2. Use the Virtual IP to Connect the Grand IP / Wi-Fi Camera PRO

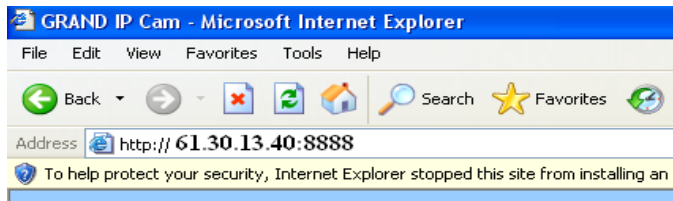
Step 1 : In this Page “Device Administrator Setup”, please enable the function “Multiport Defaults” and assign a port number for the Grand IP / Wi-Fi Camera PRO.



Step2 : Setup your firewall or gateway, and assign a Local Virtual IP:192.168.1.100 and open a port 8888 for the IPCam, the following figure is just a example, you need to ask your Internet Service Provider



Step3 : In the Remote Computer, please open the Internet Explorer, and input the IP address: http://61.30.13.40:8888



3. Access the Grand IP / Wi-Fi Camera PRO via Internet Explorer

Start the Internet Explorer, key in the IP Address of Grand IP / Wi-Fi Camera PRO into the address field, such as 192.168.2.100, then the following diagram will appear, and key in User name : **root** and Password : **admin** to access the Grand IP / Wi-Fi Camera PRO.



PS. Please consult the “User Manual (camera pro).doc” in Driver CD for more detail.